

Texas | Commercial

Wellpoint Texas Essential provider orientation

Agenda



Wellpoint Texas Essential plan overview



Member enrollment



Credentialing



Pre-authorizations and referrals



Claims submissions



Provider resources



Key contacts and online tools



Wellpoint Texas Essential

- Wellpoint Texas Essential is a new individual *Affordable Care Act (ACA)* network that is becoming effective January 1, 2025.
- The plans will be available on the [Healthcare.gov](https://www.healthcare.gov) marketplace. We developed this network to assist members who are no longer eligible for Medicaid.
- For members becoming uninsured or are transitioning from Medicaid eligibility, these plans will provide low-cost alternatives that allow them to maintain coverage and access their preferred physician networks.



What is covered on a health insurance exchange plan?

By law, all health plans for individuals and families must cover:

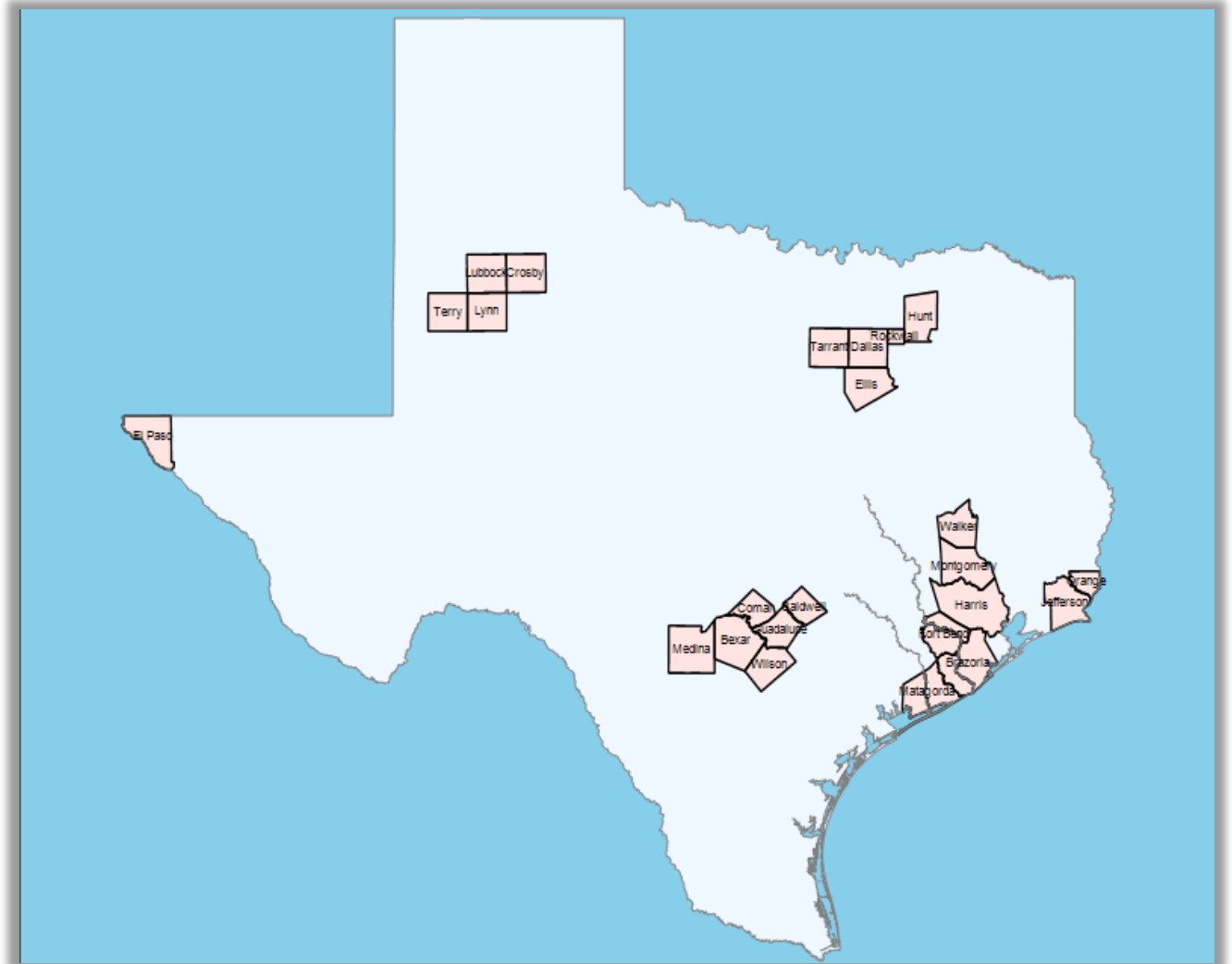
- Ambulatory patient services (outpatient care).
- Emergency services.
- Hospitalizations (such as surgery).
- Preventive and wellness services.
- Chronic disease management.
- Laboratory services.
- Pediatric services.
- Maternity and newborn care before and after birth.
- Mental health and substance use disorder services, including behavioral health treatment (such as counseling and psychotherapy).
- Prescription drugs.
- Rehabilitative services and devices (to help people with injuries, disabilities, or chronic conditions mentally or physically recover).



Wellpoint Texas Essential service area

These plans will be available in the following 24 counties starting January 1, 2025:

- Caldwell
- Jefferson
- Orange
- Dallas
- Ellis
- Hunt
- Rockwall
- El Paso
- Harris
- Crosby
- Lubbock
- Lynn
- Terry
- Bexar
- Comal
- Guadalupe
- Medina
- Wilson
- Tarrant
- Brazoria
- Fort Bend
- Matagorda
- Montgomery
- Walker



Member enrollment



Wellpoint Texas Essential open enrollment

Open enrollment occurs between November 1, 2024, and January 15, 2025.

Effective dates:

- January 1, 2025 — member enrollment completed between November 1 and December 15, 2024
- February 1, 2025 — member enrollment completed between December 15, 2024, and January 15, 2025

If the enrollment window is missed, members may still be able to enroll if they have a qualifying life event such as:

- Birth or adoption.
- Marriage.
- Divorce.
- Permanent move to a new state.
- Involuntary loss of coverage.

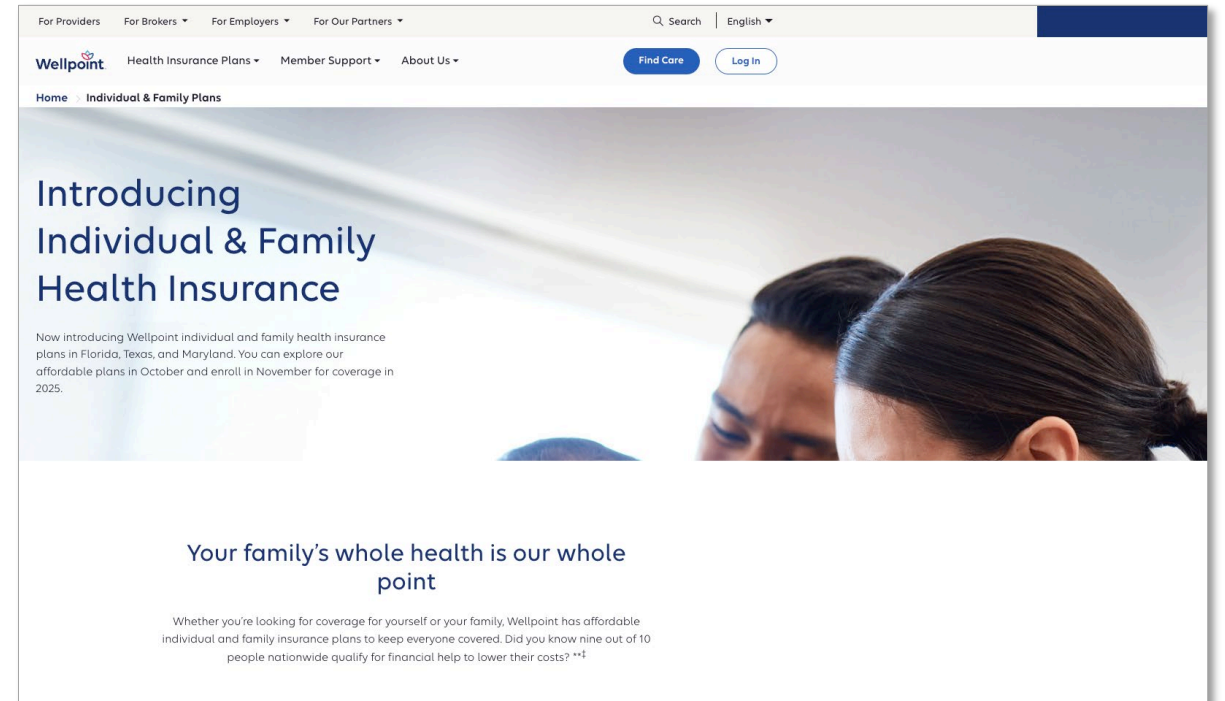


How members can enroll:

Wellpoint Texas Essential plans will be listed on the health insurance marketplace and our website.

On exchange:
[healthcare.gov](https://www.healthcare.gov)

Off exchange:
<https://www.wellpoint.com/individual-family/aca-marketplace>



Eligibility and benefits

To be eligible for coverage through a marketplace, individuals and households must¹:

1. live in the United States,
2. be a United States citizen or national² (or be lawfully present),
3. not be incarcerated.

You **cannot** use the marketplace to buy a health or dental plan if you have Medicare coverage.

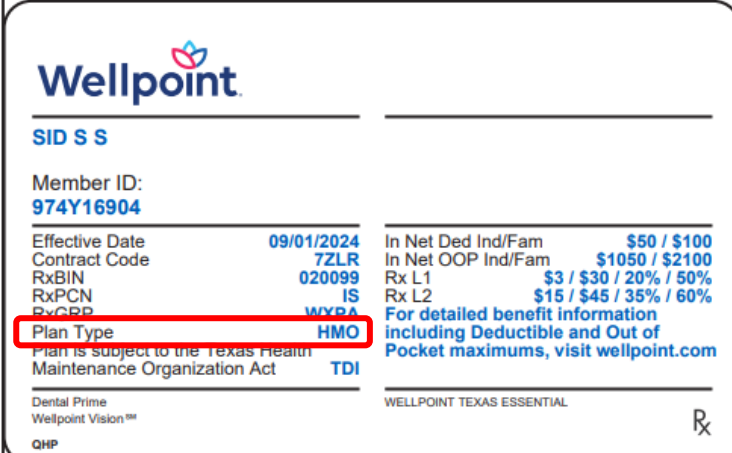
1. Source: <https://www.healthcare.gov/quick-guide/eligibility/>

2. A U.S. national is someone who's a U.S. citizen or a person who isn't a U.S. citizen but owes permanent allegiance to the U.S. With extremely limited exception by which he or she is entitled to be protected, all non-citizen U.S. nationals are people born in American Samoa or abroad with one or more American Samoan parents under certain conditions.



Member identification card

- The plan type will specify HMO or POS based on the member's plan selection.
- The network at the bottom right corner will show Wellpoint Texas Essential.
- No alpha prefixes are necessary for Wellpoint Texas Essential plans.
- Remember to use the Payor ID **WLPNT** when submitting claims to ensure correct routing.



Wellpoint

SID S S

Member ID:
974Y16904

Effective Date	09/01/2024	In Net Ded Ind/Fam	\$50 / \$100
Contract Code	7ZLR	In Net OOP Ind/Fam	\$1050 / \$2100
RxBIN	020099	Rx L1	\$3 / \$30 / 20% / 50%
RxPCN	IS	Rx L2	\$15 / \$45 / 35% / 60%
RyGRP	WYDA	For detailed benefit information including Deductible and Out of Pocket maximums, visit wellpoint.com	
Plan Type	HMO		

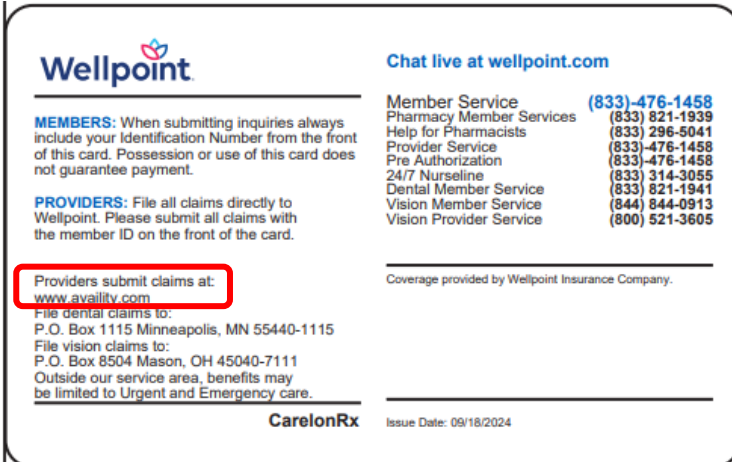
Plan is subject to the Texas Health Maintenance Organization Act **TDI**

Dental Prime
Wellpoint Vision™

QHP

WELLPOINT TEXAS ESSENTIAL

Rx



Wellpoint

Chat live at [wellpoint.com](https://www.wellpoint.com)

MEMBERS: When submitting inquiries always include your Identification Number from the front of this card. Possession or use of this card does not guarantee payment.

PROVIDERS: File all claims directly to Wellpoint. Please submit all claims with the member ID on the front of the card.

Providers submit claims at:
www.avallity.com

File dental claims to:
P.O. Box 1115 Minneapolis, MN 55440-1115

File vision claims to:
P.O. Box 8504 Mason, OH 45040-7111

Outside our service area, benefits may be limited to Urgent and Emergency care.

Member Service (833) 476-1458
Pharmacy Member Services (833) 821-1939
Help for Pharmacists (833) 296-5041
Provider Service (833) 476-1458
Pre Authorization (833) 476-1458
24/7 Nurseline (833) 314-3055
Dental Member Service (833) 821-1941
Vision Member Service (844) 844-0913
Vision Provider Service (800) 521-3605

Coverage provided by Wellpoint Insurance Company.

CarelonRx Issue Date: 09/18/2024



Credentialing

- Credentialing is for a three-year period.
- Recredentialing efforts begin six months before the end of the current credentialing period:
 - First notice and second notice letters are faxed/mailed to providers.
 - Third and final notice letters are mailed to providers.
- Providers who do not respond or submit a complete recredentialing packet will be de-credentialed/considered out-of-network:
 - Providers must begin the contracting and credentialing process from the beginning to rejoin the network.



Availity Essentials resources

Wellpoint has designated Availity Essentials to operate and service your EDI entry point (EDI gateway) and other self-service tools. Registration for the secured content on Availity Essentials is easy.

Online claims submission

Use our free online claim submission application at [Availity.com](https://www.availity.com). You can submit claims, check claims status, dispute claim payment, and use Clear Claim Connection.

Eligibility verification/authorization

You can verify member eligibility and submit authorizations by searching with the Wellpoint subscriber or state-issued identification number. You can also submit prior authorization requests online through [Availity.com](https://www.availity.com).

Digital provider enrollment: New provider enrollment is accessible through [Availity.com](https://www.availity.com). A demographic change received outside the standard independent physician association (IPA) or physician-hospital organization (PHO) process will not be processed separately.

Demographic changes: Please submit all demographic changes through [Availity.com](https://www.availity.com) provider data management (PDM).

Visit Availity Essentials for additional resources.
Availity Client Services is available at
800-282-4548 (800-AVAILITY),
Monday through Friday, 9 a.m. to 6 p.m., CT.



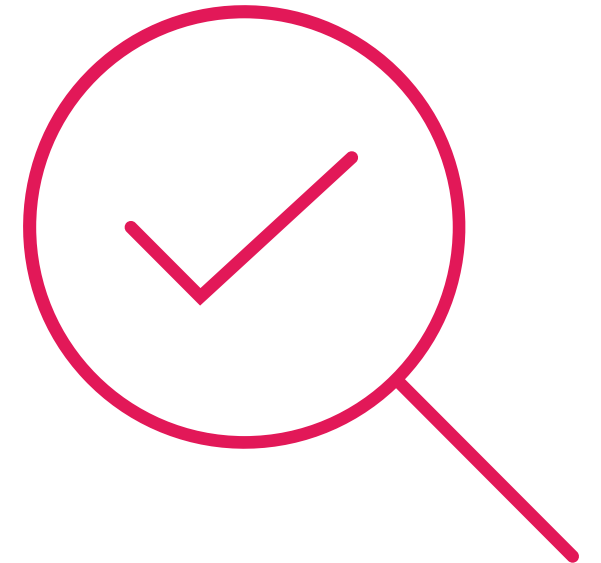
Total Member View

- Total Member View (TMV) is an application in Availity Essentials that provides a picture of a member's health and treatment history, including gaps in care and care reminders.
- Sharing relevant case information in a timely, useful, and confidential manner is a Wellpoint requirement.
- To access Total Member View (TMV), log in to [Availity.com](https://www.availity.com) and select **Wellpoint** under *Payer Spaces*. It will appear under the *Applications* tab on the bottom portion of the screen.



Is prior authorization required?

- Determine if specific outpatient procedures and/or services require prior authorization through the precertification lookup tool, which allows you to search by market, member's product, and CPT® code.
- Resources such as our provider website and your provider manual will also help you determine if prior authorizations are necessary.
- Prior authorizations can be submitted through the Authorization application on Availity.



Required documentation for prior authorizations

- A completed prior authorization request is required to eliminate delays in processing, which includes all required essential information, documentation, current clinical information, and a signed authorization form by the requesting provider.
- **Note:** Obtaining a prior authorization is not a guarantee of payment.

To prevent delays, we request the following information to be included with the request to allow for timely processing:



Requesting provider's name, NPI, Tax Identification Number, and signature



Diagnosis code, CPT, HCPCS, or current dental terminology (CDT)



Service request start and end date and quantity of service units requested based on the CPT, HCPCS, or CDT requested



Member name, date of birth, and the Wellpoint subscriber and state-issued identification number



Contact information for prior authorizations and related services

If you have questions, contact Provider Services at **833-476-1458**. Staff are available Monday through Friday from 8 a.m. to 5 p.m. local time, excluding state-observed holidays. You may leave a confidential voicemail after hours and your call will be returned the next business day.

Inpatient/outpatient surgeries	833-476-1458 (phone) 866-488-2839 (fax)
Inpatient discharge planning:	All requests should be submitted electronically using our preferred method at Availity.com .
Behavioral health services (digital options):	All requests should be submitted electronically using our preferred method at Availity.com . Behavioral health provider line: 800-397-1630
Specialized care services:	All requests should be submitted electronically using our preferred method at Availity.com : <ul style="list-style-type: none"> • Back and spine procedures • Durable medical equipment (DME) • Home health nursing (PDN, SNV, HHA) • Medical injectable/infusible drugs • Pain management injections and wound care • Therapy (physical, occupational, and speech)
<p>Carelon Medical Benefits Management, Inc. (formerly AIM) Call Center: 833-529-8773 MBM provider website support team: 800-252-2021</p> <p>Carelon Medical Benefits Management, Inc. is an independent company providing utilization management services on behalf of the health plan.</p>	<p>All requests should be submitted electronically using our preferred method via Availity.com or http://www.providerportal.com/:</p> <ul style="list-style-type: none"> • Radiology • Cardiovascular • Genetic testing • Musculoskeletal (pain, joint, and spine) • Sleep study • Radiation therapy • Medical oncology • Surgical • Rehabilitation (PT/OT/ST)



Referrals

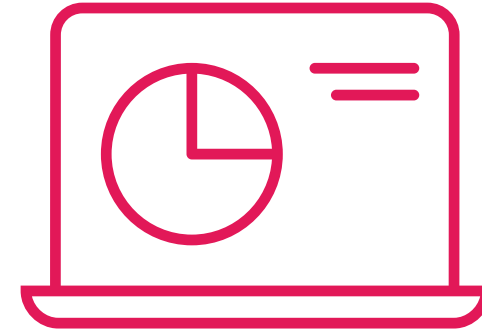
Specialty referrals:

- All Wellpoint Texas Essential plans (HMO and POS) are open access, meaning members do not require referrals to see a specialist.
- Members still require a PCP selection.



Claim submission options

- Electronic data interchange (EDI)
- Availity Essentials
- Paper
- Timely filing is within 95 days of the service date



Electronic submission payers (preferred)	EDI hotline	Paper submission
<ul style="list-style-type: none">• Availity Essentials: 800-282-4548• Website: Availity.com• Payer ID: WLPNT	<ul style="list-style-type: none">• Phone: 800-590-5745	<ul style="list-style-type: none">• Please refer to the <i>Provider Manual</i> for the process of submission.



Rejected versus denied claims

What are the differences between rejected and denied claims?

- **Rejected:**

- Does not enter the adjudication system due to missing or incorrect information.
- Resubmission is subject to a 95-day timely filing deadline.

- **Denied:**

- Does go through the adjudication process but is denied for payment.
- An appeal deadline of 365 days from the *Explanation of Payment (EOP)* date applies.

For claims inquiries, please call Provider Services at **833-476-1458**.



Payment dispute process

- Per the *Provider Manual*, claim disputes must undergo a two-step process, which includes reconsideration and appeals.
- For claim payment reconsiderations, providers have a 365-day filing deadline from the issue date of the *EOP*.
- For claims payment appeals, providers have a 90-day deadline from the date the reconsideration is determined.
- Providers may use the payment dispute tool at [Availity.com](https://www.availity.com). The attachment feature allows providers to upload supporting documentation.



Electronic remittance advice and electronic funds transfer enrollment

Electronic remittance advice (ERA):

- The ERA eliminates the need for paper remittance reconciliation.
- Use Availity Essentials to register and manage ERA account changes with these easy steps:
 1. Log in to [Availity.com](https://www.availity.com) >
 2. Select **My Providers** >
 3. Then **Enrollment Center** >
 4. Then **ERA Enrollment**

Note: If you use a clearinghouse or vendor, please work with them on ERA registration and receiving your ERAs.

Electronic funds transfer (EFT):

- EFT is a secure and fast way to receive payment, reducing administrative processes.
- EFT deposits are assigned a trace number matched to the ERA for simple payment reconciliation.
- Use enrollsafe.payeehub.org to register and manage EFT account changes.



Continuity of care services

- We will work to facilitate the continuity of care/transition of care (COC/TOC) when members or their covered dependents with qualifying conditions need assistance in transitioning to in-network providers or facilities.
- Please refer to the *Provider Manual* for a full list of the continuity and coordination guidelines for PCPs and behavioral health providers.
- Continuity of care does not exempt providers from following billing guidelines, such as correct coding and timely filing. Claims can be denied for these errors.



Fraud, waste, and abuse

Help us prevent it and tell us if you suspect it!

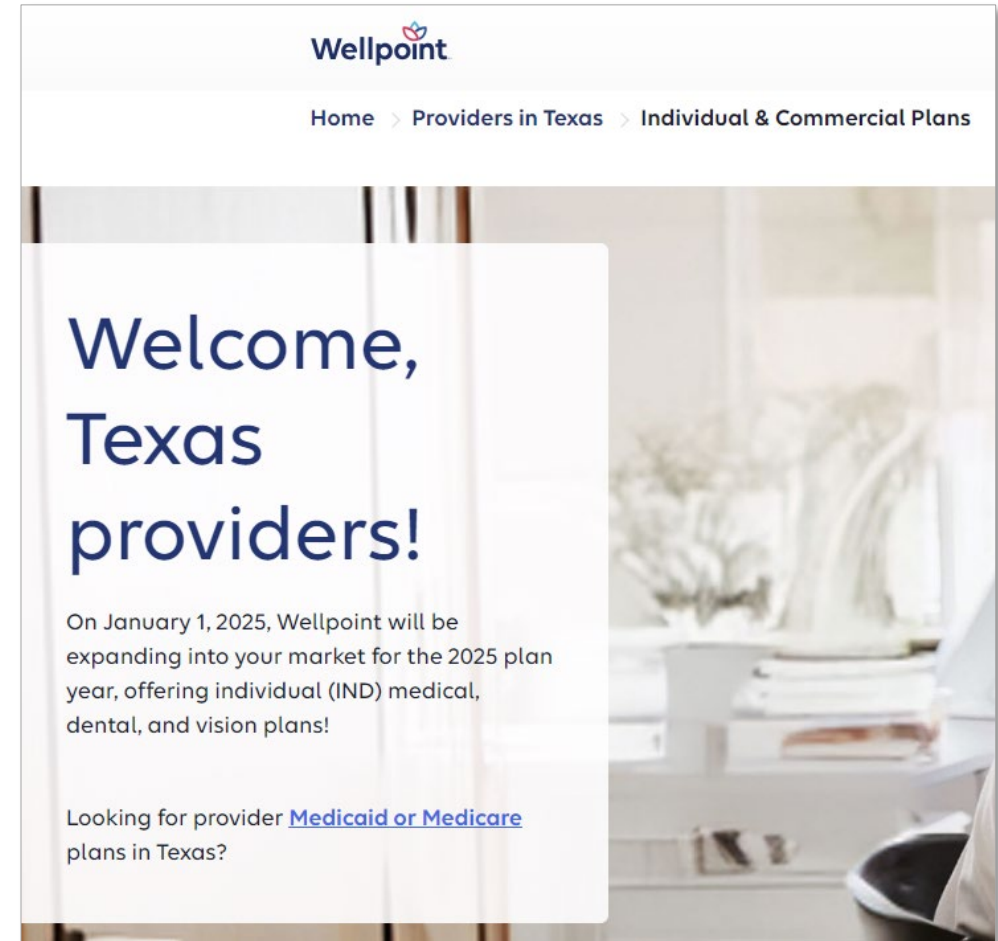
How to report:

- You can find *Healthcare Fraud Prevention* information on our website, which will direct you to the www.fighthealthcarefraud.com education site.
- Click **Report It** and complete the *Report Waste, Fraud, and Abuse* form.
- Providers or facilities may also contact customer service using the phone number on the back of the member ID card.



Provider website

- Available to all providers regardless of participation status
- Multiple resources available without login
- Accessible 24/7
- www.wellpoint.com/tx/provider/welcome-individual-commercial



Provider communications and training resources

We have curated trainings and provider communications to ensure you, and your staff are aware of updates, training, and onboarding resources that every provider — new or experienced — can use to further their education. All training resources are accessible through the training academy:

- For more information, visit:
<http://www.wellpoint.com/tx/provider/welcome-individual-commercial>



Key contacts and online tools

- **Provider Call Center: 833-476-1458**
- **Claims mailing address: Wellpoint, P.O. Box 105187 Atlanta, GA 30348-5187**
- **Centralized online real-time record (CORR)/medical records:**
Wellpoint, P.O. Box 105557 Atlanta, GA 30348-5557
- **Appeals: Wellpoint, P.O. Box 105568 Atlanta, GA 30348-5568**
- **Provider UM clinical phone number: 833-531-2239**
- **Referral and authorization information: Availity Essentials through [Availity.com](https://www.availity.com)**

Remember to validate your provider data through Availity Essentials every 90 days to ensure we have your current information.



Provider relationship account management responsibilities



What if I need assistance?

If you have questions about this communication or need assistance with any other item, contact your assigned provider relationship management associate or Provider Services at **833-476-1458**.



Next steps

- Register for Availity Essentials.
- Register for electronic data interchange.
- Register for EFT services.
- Read your *Provider Manual*.
- Visit our provider website.



Thank you
for working with us!





<https://www.provider.wellpoint.com/tx>

Coverage provided by Wellpoint Insurance Company.

TXWP-CM-079488-25 | March 2025